

A message from

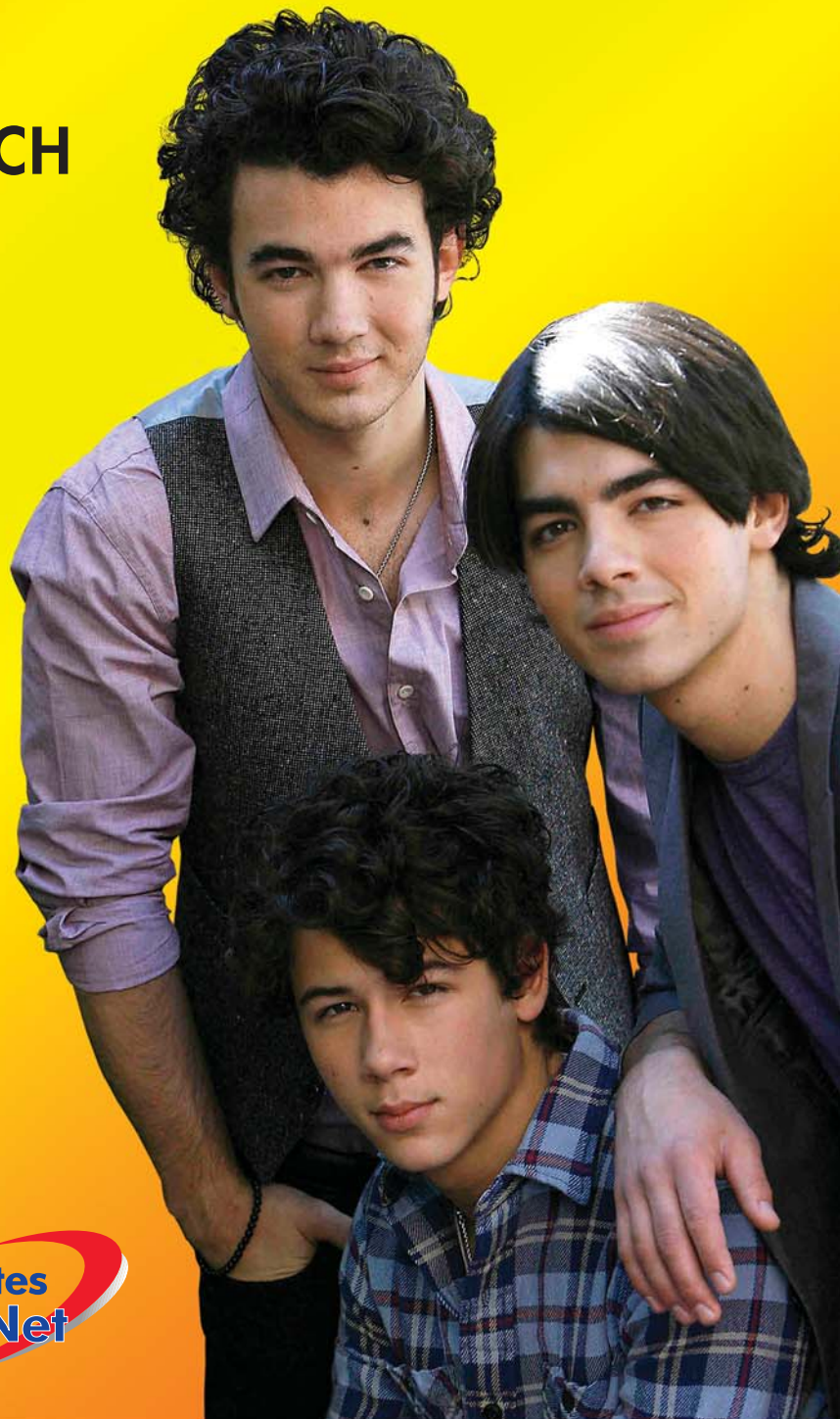
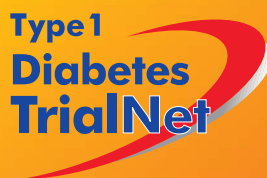
THE JONAS BROTHERS

**IF TYPE 1 DIABETES IS
IN YOUR FAMILY, GET
INVOLVED IN RESEARCH
AND GET SCREENED.**

A simple blood test may be able to detect an increased risk for type 1 diabetes up to 10 years before symptoms appear. This test is available to eligible family members of people with type 1 diabetes through TrialNet, an international research effort led by the National Institutes of Health.

Those found to be at increased risk may be eligible to join research studies that are testing ways to prevent and delay type 1 diabetes.

**GET INVOLVED.
GET SCREENED.**



**For more information about TrialNet,
call 1-800-425-8361
or visit www.DiabetesTrialNet.org**

Type 1 Diabetes TrialNet, a global network of researchers dedicated to the study, prevention, early detection and early treatment of type 1 diabetes, is supported by:

